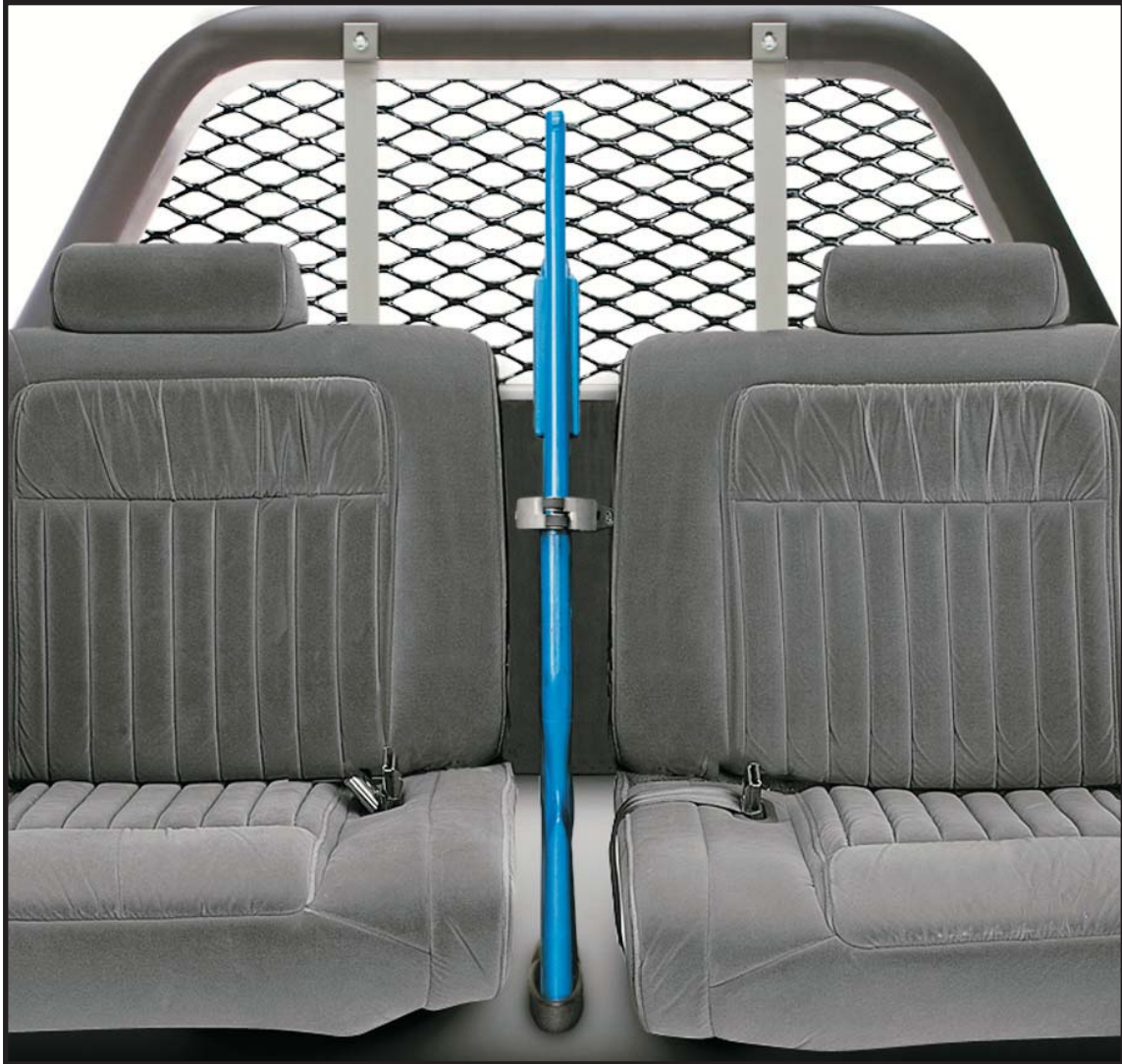


TUFLOC

INSTALLATION INSTRUCTIONS

X-Lock Vertical Mount Gun Rack



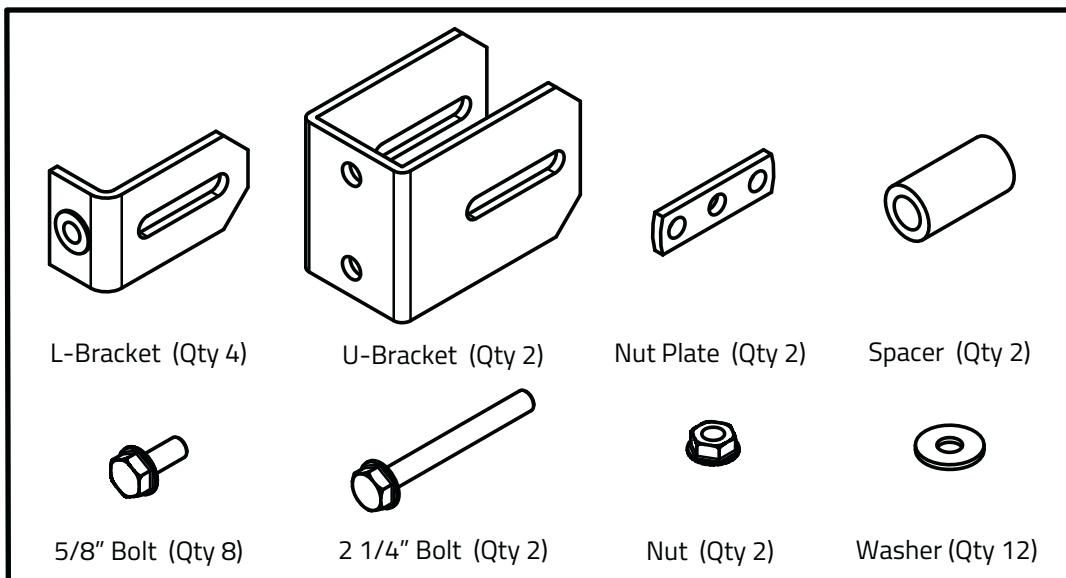
Congratulations and thank you for your recent purchase of the **TUFLOC** gun rack system. Esmet has designed and manufactured the highest quality products for over sixty-five years and we are confident that you will be a satisfied Tufloc product owner.

This manual includes simple step by step instructions to install, operate and maintain your gun rack. Please contact the factory if you have any installation or operation questions.

X-Lock Vertical Mount

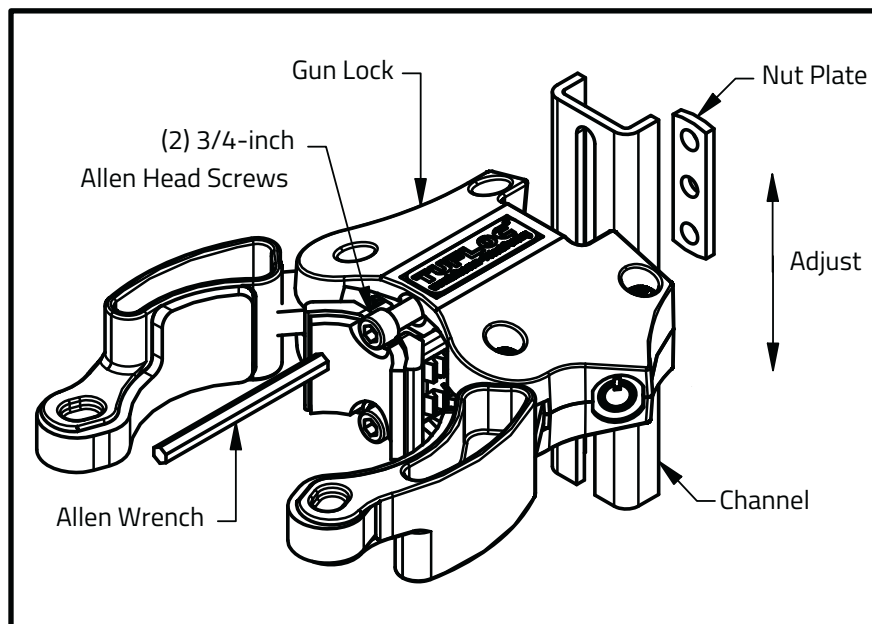
Tufloc gun racks are custom designed to secure specific gun models. Gun Racks are shipped with the components already attached. **All gun rack components are necessary to properly secure the gun. Do not remove components.**

Hardware Kit



Ensure a Proper Fit

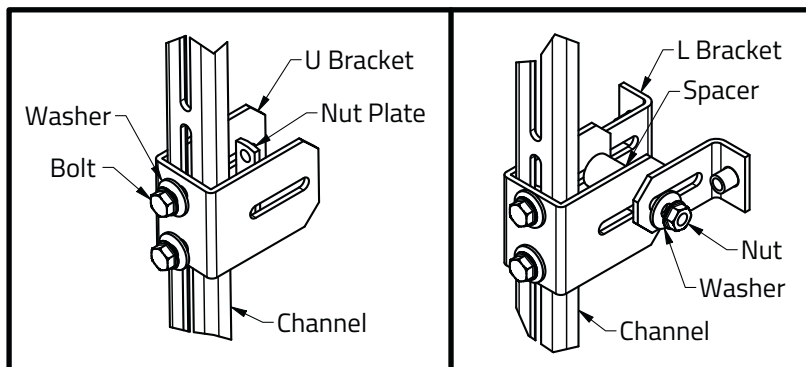
1. It may be necessary to adjust the components to fit a specific make/model of gun. To make adjustments, use the key to open the Gun Lock. Without completely removing the screws, use a 3/16" Allen Wrench to loosen the screws. This will allow the Gun Lock to slide along the channel.
2. Place the gun in the rack and slide the Gun Lock along the channel. The proper position of the Gun Lock will keep the gun from being lifted out of the butt pocket and will keep ammunition from being chambered. The butt pocket may also need to be adjusted. This can be done by loosening the nuts on the rear of the back plate for up/down adjustment. Nuts can be loosened in butt pocket for in/out adjustment.
3. Once all adjustments are made, verify that the gun fits securely by locking it in the rack.



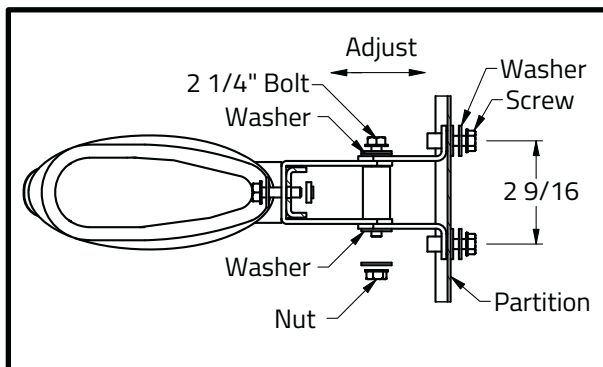
Mount to Partition

1. Before placing the Gun Rack into vehicle, assemble the brackets onto the Channel of the Gun Rack as shown in Bracket Assembly Diagram. (See Bracket Assemblies diagram below.)
2. Two U-Brackets will be used to secure the Gun Rack to the Partition. When positioning the U-Brackets along the Channel, try to create the largest possible spacing between the two Brackets.
3. Place the U-Bracket over the Channel. Using two washers, two 5/8" bolts and one nut plate, attach the U-Bracket to the gun rack and tighten completely. Place the spacer inside the U-Bracket and attach the two L-Brackets with legs facing outward using a washer, 2-1/2" bolt and nut. Do not fully tighten. Repeat for the other mounting Bracket Assembly.

Bracket Assemblies

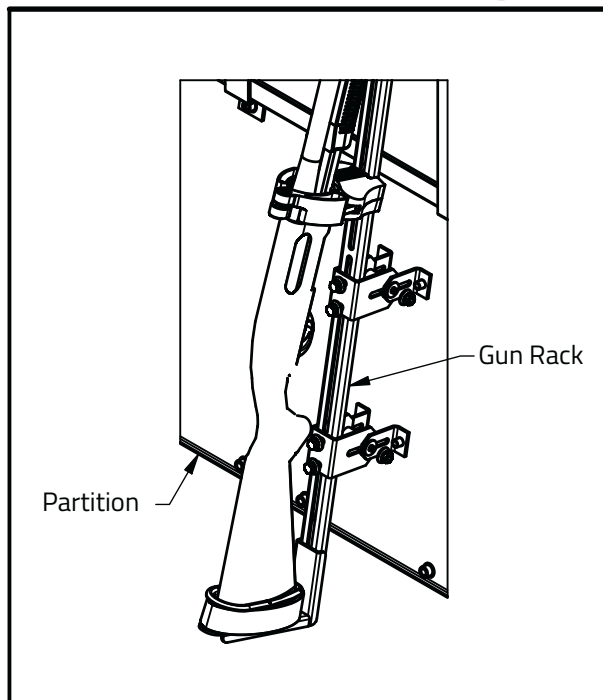


Top View Mounting Brackets



4. Place the Gun Rack with gun into the vehicle and determine the best location on the partition for the Bracket Assemblies.
5. Mark the four locations where the pre-welded nuts on the L-Brackets will attach to the partition.
6. Remove the Gun Rack from the vehicle. Making sure the four marks from Step 5 are aligned vertically and horizontally, center punch the marks.
7. Using a 5/16" drill bit, drill through the partition. Use the 5/8" Bolts and Washers to secure the L-Bracket assemblies to the partition. (See Mounting Bracket diagram above.)
8. Place the gun into the Gun Rack and adjust the Gun Rack to its desired distance from the partition. Tighten the two 2-1/4" bolts on the upper and lower mounting Bracket Assemblies.

Gun Rack Assembly



Electrical

- Attach and insulate the wires following the enclosed wiring diagram. Ensure that the wires are not pinched as they are routed towards the most convenient power and grounding source.